

AVAC 10 IL and 20 IL INLINE Ejectors

- High vacuum version (H) for air tight materials
- High flow version (L) for porous materials
- Alternative attachments
 - Push-in connection 6 mm
 - External G1/8 thread
- Very compact
- Low weight
- Reactive
- No moving parts
- Robust design
- Facile attachment

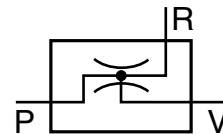


The very compact design and the low weight of the inline ejector makes it suitable for applications in e.g. the electronic industry. Both the compressed air as well as the vacuum connections are available with push-in fittings alternatively external threads which simplifies the installation of the ejector.

The ejectors are available with nozzles for high vacuum (H) alternatively high flow (L) and in two sizes.

Materials

Body	POM, glass inforced
Nozzles	Aluminium
Seals	NBR
External G1/8 thread	Anodized aluminium
Push-in connection 6 mm	POM/Brass nickel plated



Temperature

Temperature range -10 to +70 °C

Compressed air

Pressure max 8 bar
Optimum supply pressure 5 bar

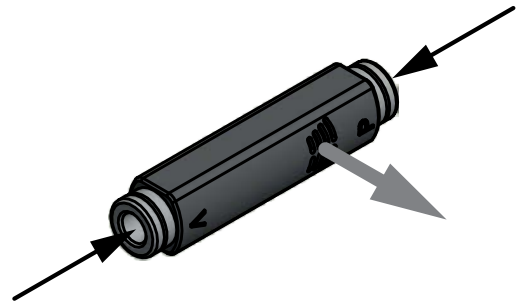
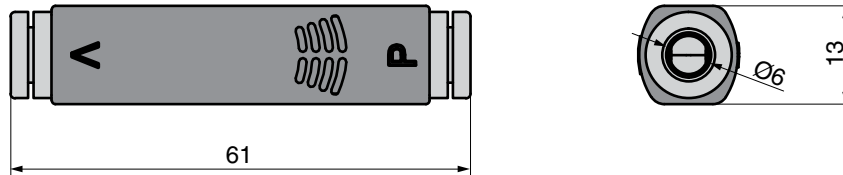
Ejectors available in two versions:

H version with high vacuum nozzles for air tight materials
L version with high flow nozzles for porous materials

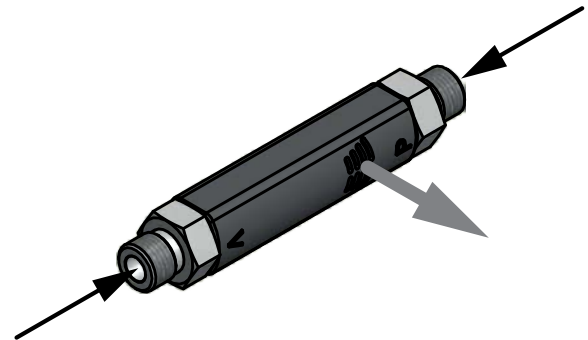
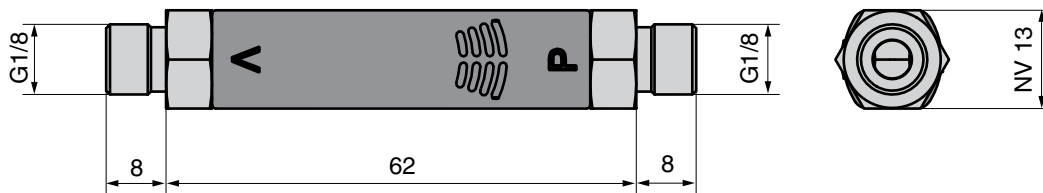
Vacuum flow of the ejector and the primary nozzle diameter

Designation	Vacuum flow at different vacuum level [NI/min]									Primary nozzle(s) Ø mm
	0%	10%	20%	30%	40%	50%	60%	70%	80%	
AVAC 10 IL-LS	14	12	10	7.6	5.0	2.6	0.4	-	-	0.5
AVAC 10 IL-HS	8	7	6	5.2	4.2	3.4	2.4	1.3	0.6	0.5
AVAC 10 IL-LG	14	12	10	7.6	5.0	2.6	0.4	-	-	0.5
AVAC 10 IL-HG	8	7	6	5.2	4.2	3.4	2.4	1.3	0.6	0.5
AVAC 20 IL-LS	29	25	21	16.2	11.0	5.8	1.0	-	-	0.7
AVAC 20 IL-HS	15	13	10.8	8.8	7.2	5.6	4.0	2.6	1.6	0.7
AVAC 20 IL-LG	29	25	21	16.2	11.0	5.8	1.0	-	-	0.7
AVAC 20 IL-HG	15	13	10.8	8.8	7.2	5.6	4.0	2.6	1.6	0.7

Inline Ejector with
Push-in connection 6 mm



Inline Ejector with
External G1/8 thread



P = Air connection
V = Vacuum Connection
R = Exhaust

 **3D CAD FILES (STEP)**
Download via:
<http://www.avac.se/en/home/>

Ejectors AVAC INLINE

Designation	Vacuum level	Vacuum flow	Connection	Air consumption NI/min	Vacuum level*	Evacuation time (s)**	Weight g	Order no.
AVAC 10 IL-LS	Low	High	Push-in connection 6 mm	13	63	4.1	12	110 010 20
AVAC 10 IL-HS	High		Push-in connection 6 mm	13	88	15.2	12	110 010 21
AVAC 10 IL-LG	Low	High	External G1/8 thread	13	63	4.1	15	110 010 22
AVAC 10 IL-HG	High		External G1/8 thread	13	88	15.2	15	110 010 23
AVAC 20 IL-LS	Low	High	Push-in connection 6 mm	26	62	2	12	110 020 20
AVAC 20 IL-HS	High		Push-in connection 6 mm	26	90	7.3	12	110 020 21
AVAC 20 IL-LG	Low	High	External G1/8 thread	26	62	2	15	110 020 22
AVAC 20 IL-HG	High		External G1/8 thread	26	90	7.3	15	110 020 23

* All data at 5 bar supply pressure

** Time to evacuate 1 litre air from the atmospheric pressure to 75% vacuum for HS/HG and 50% vacuum for LS/LG.

Operating Instructions
<http://www.avac.se/pdf/i-INLINE.pdf>

