

AUTOVAC 60, 180 and 360

- > 85% vacuum at 5 bar
- The holding valve in the vacuum port reduces time before the load is dropped due to pressure loss
- Solenoid valve for vacuum
- Solenoid valve for Rapid Release (RR)
- Protection: IP65

Options

Vacuum sensor (see separate page)

- MICRO Digital
- ATTO Digital
- FEMTO Analog / Digital
- PICO Digital / Display



Air Saving Automatic Function and increased safety

Complete vacuum units with an air consumption between 60-360 l / min. By connecting a vacuum sensor to the external control system, the air consumption may be shut off when the set vacuum level is reached. Vacuum holding valve shuts and the vacuum sensor monitors the maximum and minimum level. Compressed air consumption is reduced to a minimum. To release the load a signal is given to the solenoid valve for blow off, and the vacuum-side is pressurized to release the load.

Materials

Ejector housing Black anodized aluminium
Nozzle Brass

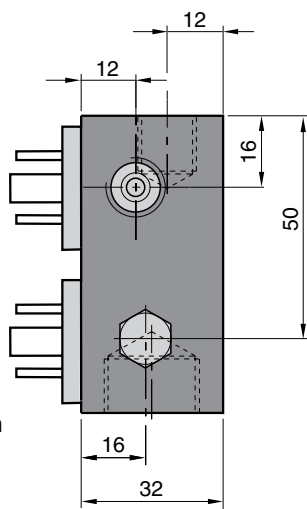
Temperature

Temperature range -10 to +50 °C

Compressed air

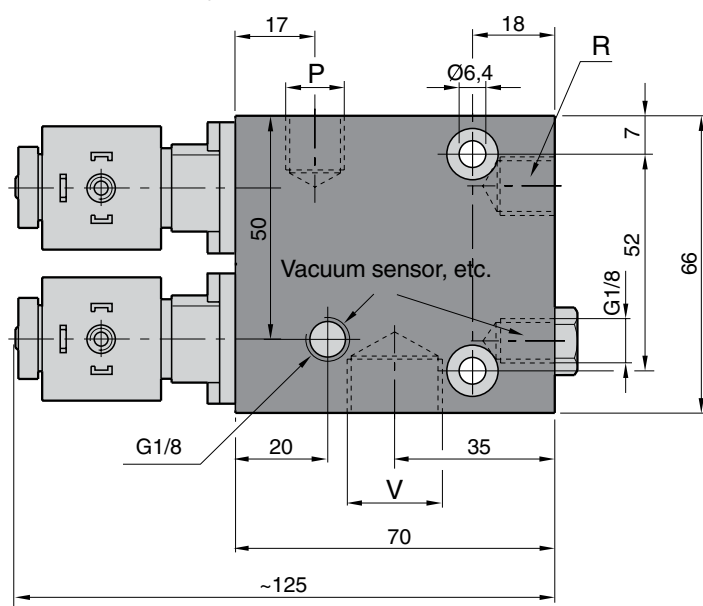
Pressure max 7 bar
Optimum supply pressure 5,2 bar Size 60
Optimum supply pressure 5,6 bar Size 180
Optimum supply pressure 6,4 bar Size 360

AUTOVAC 60



P = Air connection
V = Vacuum Connection
R = Exhaust

 **3D CAD FILES (STEP)**
Download via:
<http://www.avac.se/en/home/>



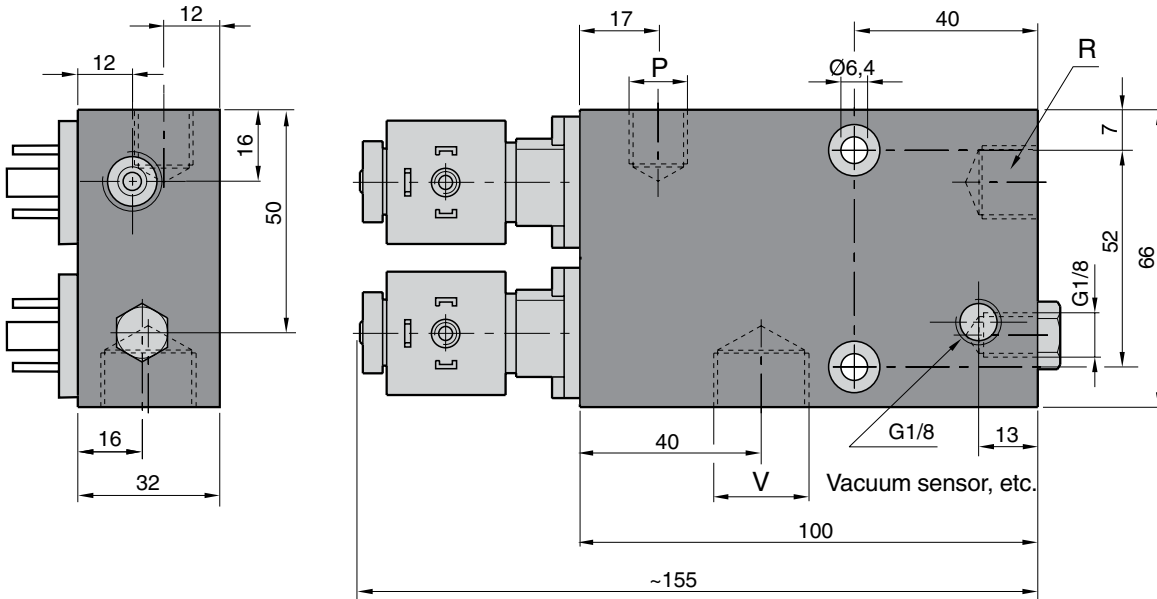
Vacuum flow of the ejector and the primary nozzle diameter

Designation	Vacuum flow at different vacuum level [NI/min]									Primary nozzle(s) Ø mm
	0%	10%	20%	30%	40%	50%	60%	70%	80%	
AUTOVAC 60	42.6	37.6	32.0	27.0	20.1	15.3	10.3	3.3	1.5	1.25

Designation	Connecting threads			Air consumption NI/min.	Evacuation time (s)*	Weight g	Order no.
	P	V	R				
AUTOVAC 60, 24VDC, 4,5 W	G1/4	G1/2	G1/4	60	3	650	112 060 07

* Time to evacuate 1 litre air from atmospheric pressure to 75% vacuum.

AUTOVAC 180 and 360

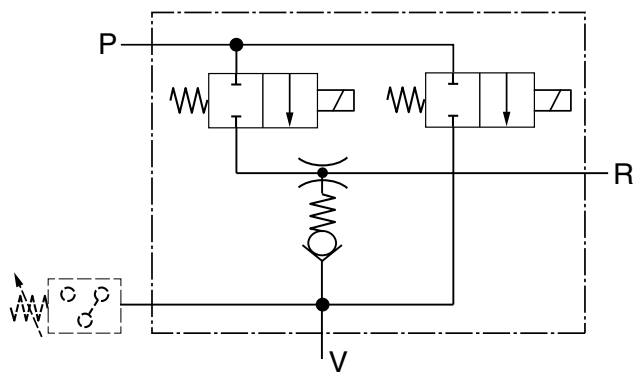


Vacuum flow of the ejector and the primary nozzle diameter

Designation	Vacuum flow at different vacuum level [NI/min]									Primary nozzle(s) Ø mm
	0%	10%	20%	30%	40%	50%	60%	70%	80%	
AUTOVAC 180	105.0	86.0	75.3	64.6	52.0	40.8	24.5	10.0	4.5	2.1
AUTOVAC 360	168.0	136.0	120.0	102.0	85.0	56.2	41.0	22.0	11.0	3.1

Designation	Connecting threads			Air consumption NI/min.	Evacuation time (s)*	Weight g	Order no.
	P	V	R				
AUTOVAC 180, 24VDC, 4,5 W	G1/4	G1/2	G3/8	180	1	820	112 181 07
AUTOVAC 360, 24VDC, 4,5 W	G1/4	G1/2	G1/2	360	0.5	900	112 364 07

* Time to evacuate 1litre air from atmospheric pressure to 75% vacuum.



P = Air connection
 V = Vacuum Connection
 R = Exhaust

Solenoid valve for Ejector AUTOVAC

Voltage 24 VDC
 Power 4.5 W
 Max. pressure 10 bar
 Protection class IP65 (with cable connector mounted)



Cable connector according to EN175301-803 Type A, (former DIN 43650-A), ISO 4400 to be ordered separately

Designation	Order no.
Cable connector Type A with LED and surge protection	590 024 00

We recommend using the cable connector equipped with LED indicators for an easy overview and troubleshooting, and equipped with surge protection in order to both protect and provide other electrical/electronic equipment a longer lifespan.

Operating Instructions
<http://www.avac.se/pdf/I-AUTOVAC.pdf>

