

Ejectors AVAC 10 and 10E

- >85 % vacuum at 4 bar supply pressure
- Very compact
- Low weight
- Quick response
- No moving parts
- Robust
- Easy mounting

The compact size of the Mini ejector and the low weight makes it suitable for applications in the electronics industry.

AVAC 10 has an extra mounting thread M5 to facilitate attachment.

Materials

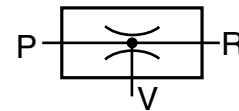
Body Black anodized aluminium
 Nozzles Brass

Temperature

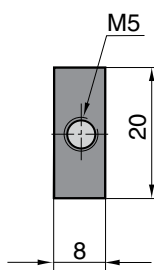
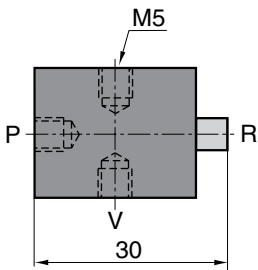
Temperature range -10 to +70 °C

Compressed air

Pressure max 8 bar
 Optimum supply pressure 4 bar



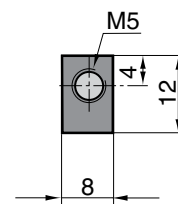
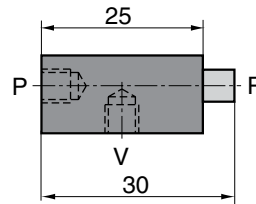
AVAC 10



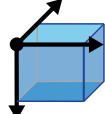
P = Air connection

V = Vacuum Connection

AVAC 10E



R = Exhaust



3D CAD FILES (STEP)
 Download via:
<http://www.avac.se/en/home/>

Vacuum flow of the ejector and the primary nozzle diameter

Designation	Vacuum flow at different vacuum level [NI/min]									Primary nozzle(s) Ø mm
	0%	10%	20%	30%	40%	50%	60%	70%	80%	
AVAC 10/ 10E	7.5	6.5	5.5	4.0	2.5	1.0	0.8	0.5	0.3	0.5

Designation	Air consumption NI/min	Evacuation time (s)*	Weight g	Order no.
AVAC 10	10	18	13	110 010 00
AVAC 10E	10	18	8	110 010 01

* Time to evacuate 1 litre air from the atmospheric pressure to 75% vacuum.

Operating Instructions
<http://www.avac.se/pdf/I-MINI.pdf>

