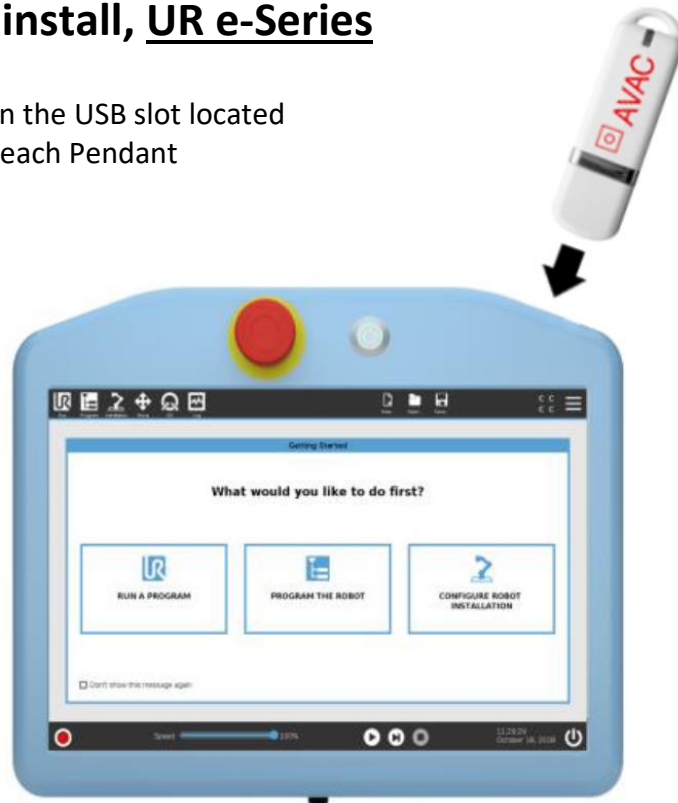



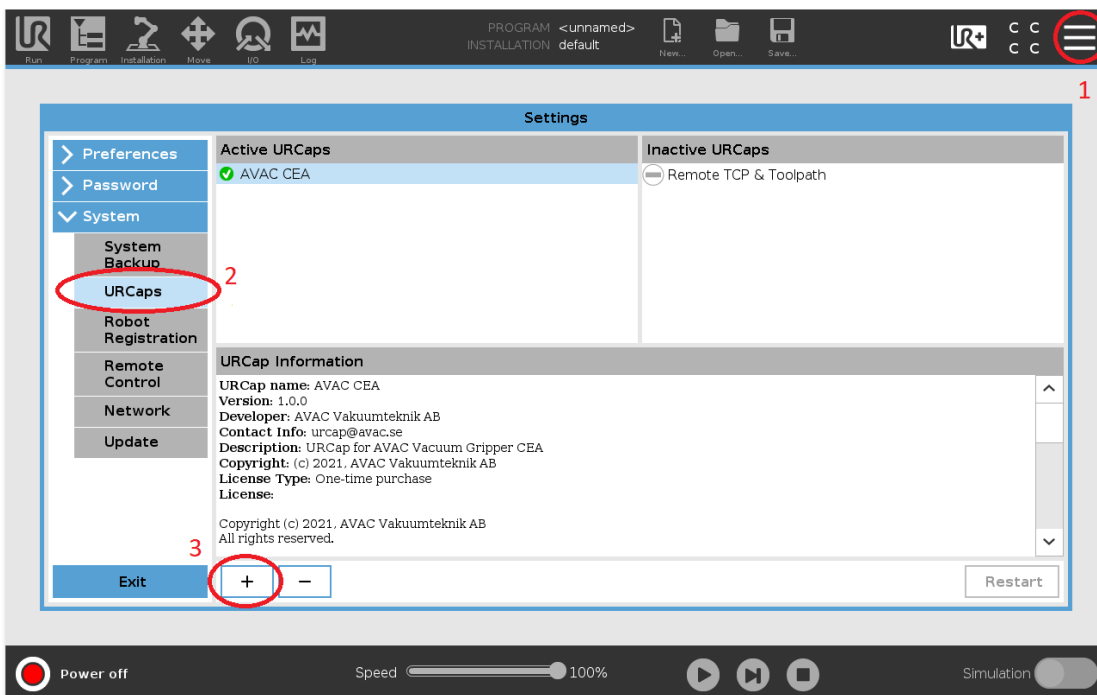
AVAC CEA URCap install, UR e-Series

Insert the AVAC USB drive in the USB slot located on top right corner of the Teach Pendant



Install sequence (see also figure below)

1. Tap the icon  in the top right corner, select Settings.
2. Tap the URcaps item from the System section
3. Tap the + sign to browse for the AVAC URcap file. It should be found in the usbdisk/UR/URCAP folder. Tap Open.




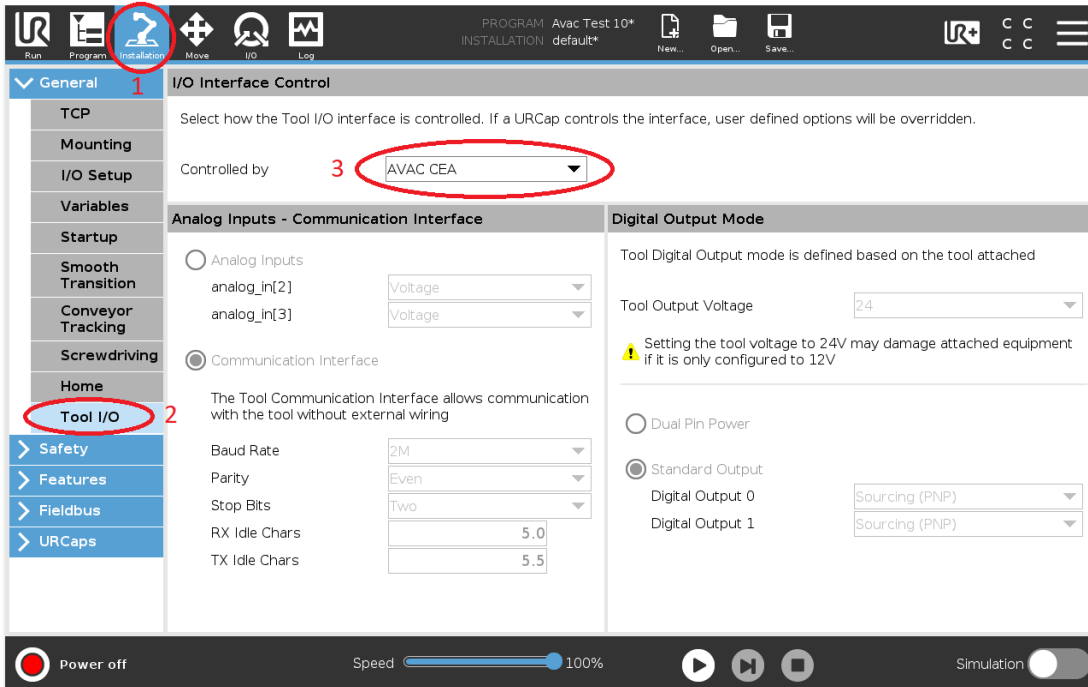
4. Restart the system for the changes to take place by tap **Restart** button and then wait for the system to be restarted.
5. Initiate the robot.

Note! For further information regarding URcap install, please see UR documentation

URCap setup

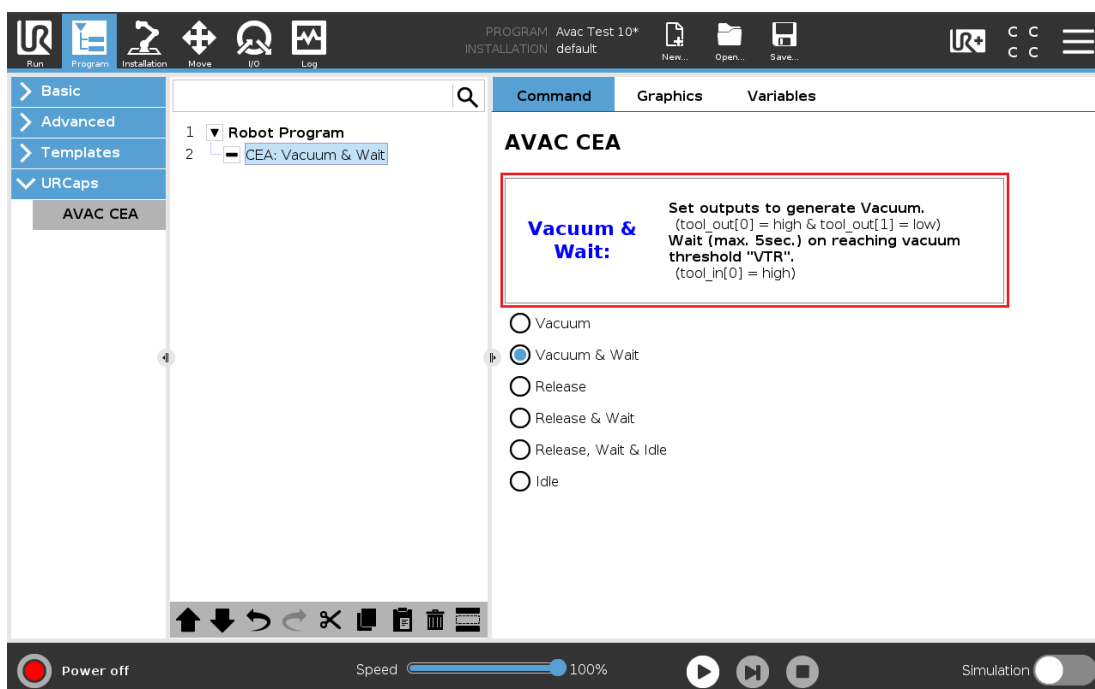
Setup sequence (See also figure below)

1. Tap the Installation icon  in the menu, select Settings.
2. Tap the Tool I/O item from the General section.
3. Make sure that "AVAC CEA" is selected in the drop-down.

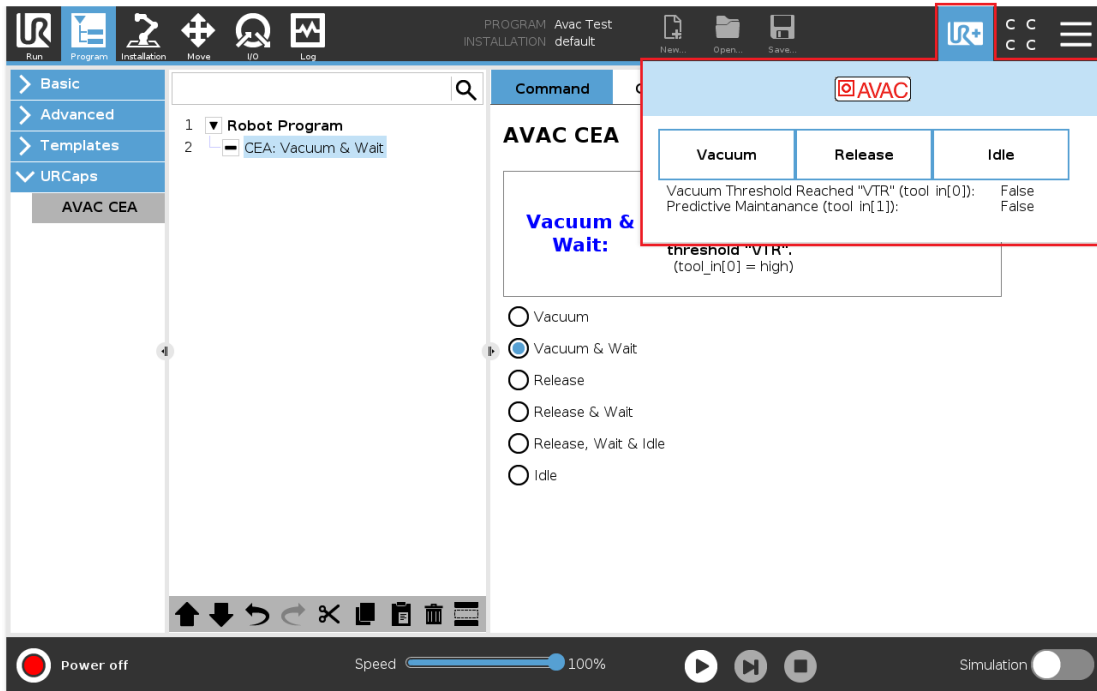


URCap functions

Each function/command are described in the GUI upon selection. For further information see the CEA Instruction available on the USB stick or on <http://www.avac.se>



A "Live Control" feature is available where you can set the outputs to test the main functions Live and see the state of the inputs.



Usage of AVAC CEA Vacuum gripper without URCAP

As the CEA Vacuum gripper main component, AVAC MFE (Multi Function Ejector) require 24V power supply and inputs are PNP (+24V), please make sure that Tool I/O configuration is set as follows:

- Output Voltage is set to “24” voltage
- Digital Output 0 and 1 are set to “Sourcing (PNP)”

UR tool I/O's vs. MFE functions

tool_out[0] = Vacuum Start

tool_out[1] = Blow off (Release object)

tool_in[0] = Vacuum Reached/Evacuated

tool_in[1] = Predictive Maintenance

Note! Depending on the MFE configuration (parameter “U”), the externally operated (tool I/O) Blow off function might be disabled. (Blow off in this case starts automatically as soon as “Vacuum Start” becomes “Low”, please see the MFE documentation)